



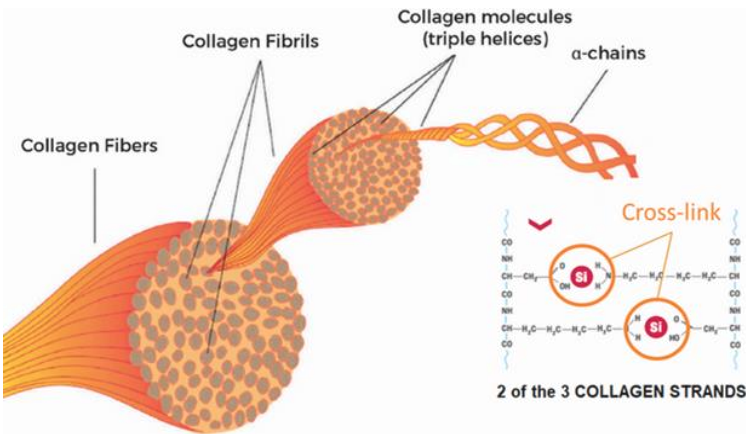
POULSIL[®]

THE BIO-ACTIVE SILICIUM

**Strengthening Collagen, Fortifying Bones, and
Maximizing Egg-Shell Strength!**

VETPHARM

The Power of Poulsil®



Silicium (Si) shows very interesting properties regarding bone health, cartilage, and blood vessels.

Because of its bond with collagen, elastin, keratin, and proteoglycans, Si contributes to the architecture, strength, durability, and elasticity of the connective tissue. Elevated intake of Silicium shows increased cortical bone strength, as well as a positive effect on the structural integrity as well as overall collagen synthesis, and bone mineralization.

Different forms of Silicium



Chemical element



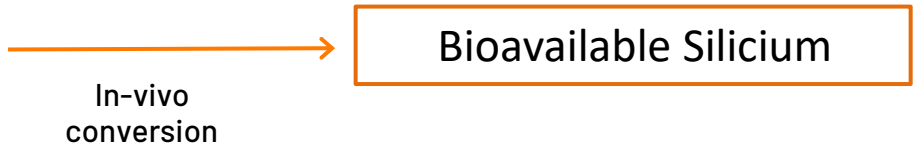
Silicium dioxide, limited bio-availability in the environment (Beer; Cereals)



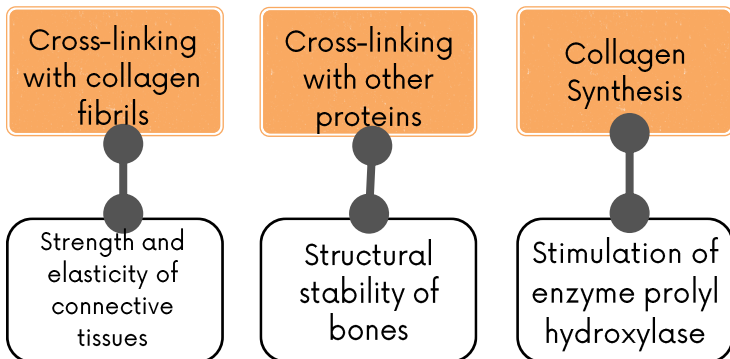
Synthetic form



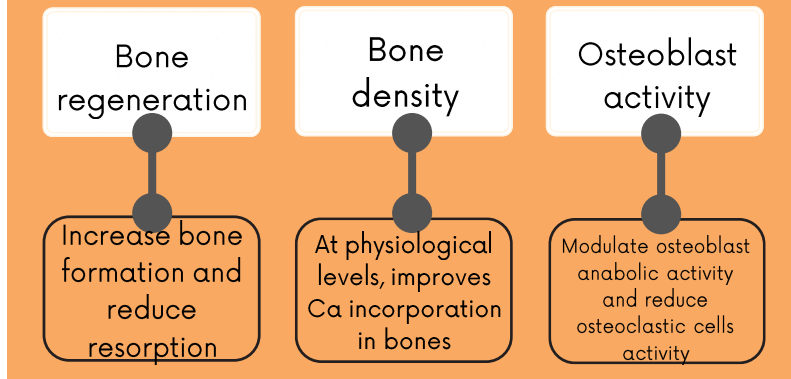
Formulated to provide highly bio-available silicium



Silicium as a vital component of collagen



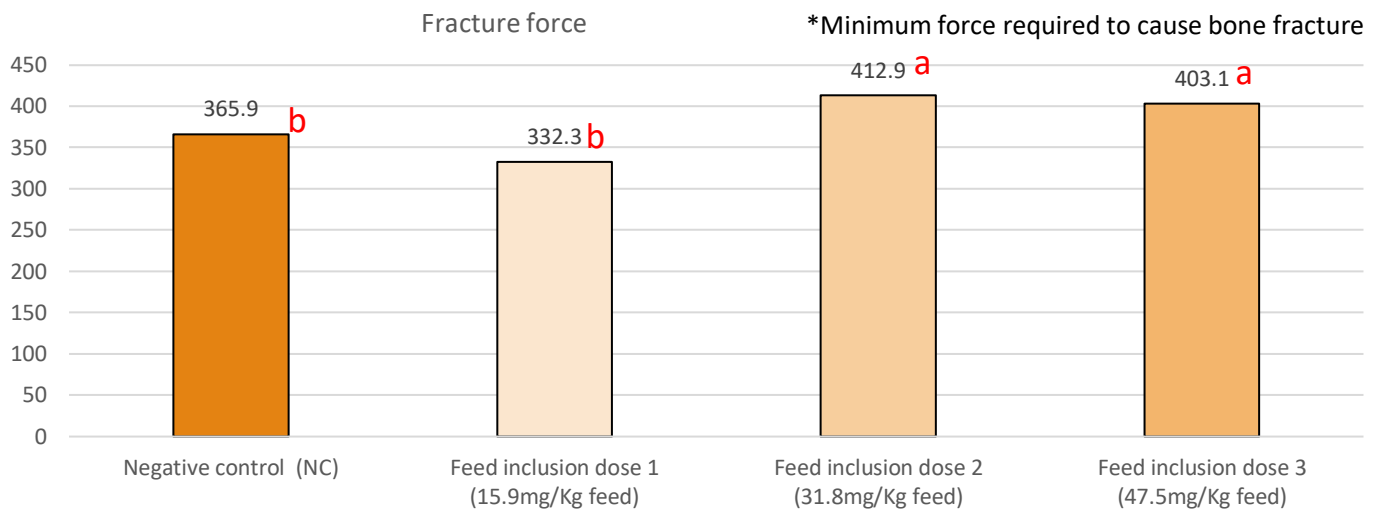
Silicium in bone remodelling



BONE HEALTH TRIAL - Bone strength

Treatment	Group name	Replicates/group	Birds/replicate	Number of birds/group
T01	Negative control (NC)	12	10	120
T02	15.9 mg/kg in feed	12	10	120
T03	31.8 mg/kg feed	12	10	120
T04	47.5 mg/kg feed	12	10	120

*Poulpharm, 2022

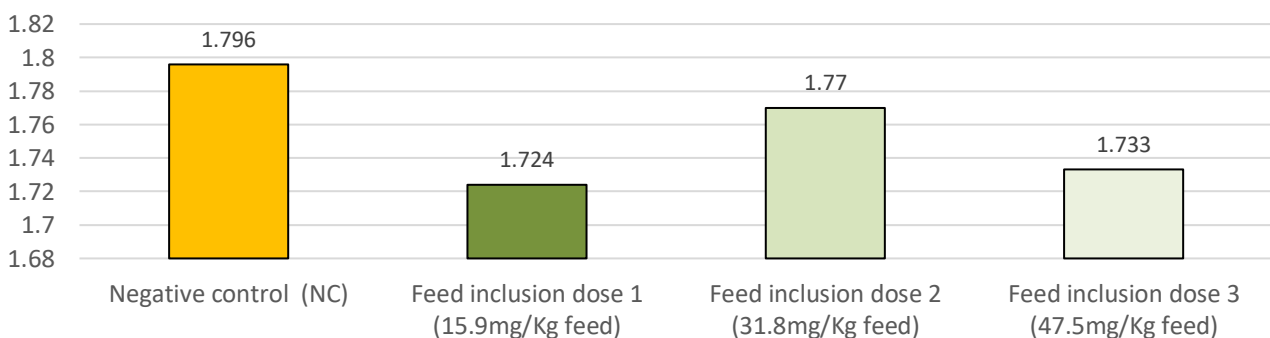


PERFORMANCE TRIAL

Treatment	Group name	Replicates/group	Birds/replicate	Number of birds/group
T01	Negative control (NC)	12	10	120
T02	15.9 mg/kg in feed for 49 days	12	10	120
T03	31.8 mg/kg feed for 49 days	12	10	120
T04	47.5 mg/kg feed for 49 days	12	10	120

*Poulpharm, 2022

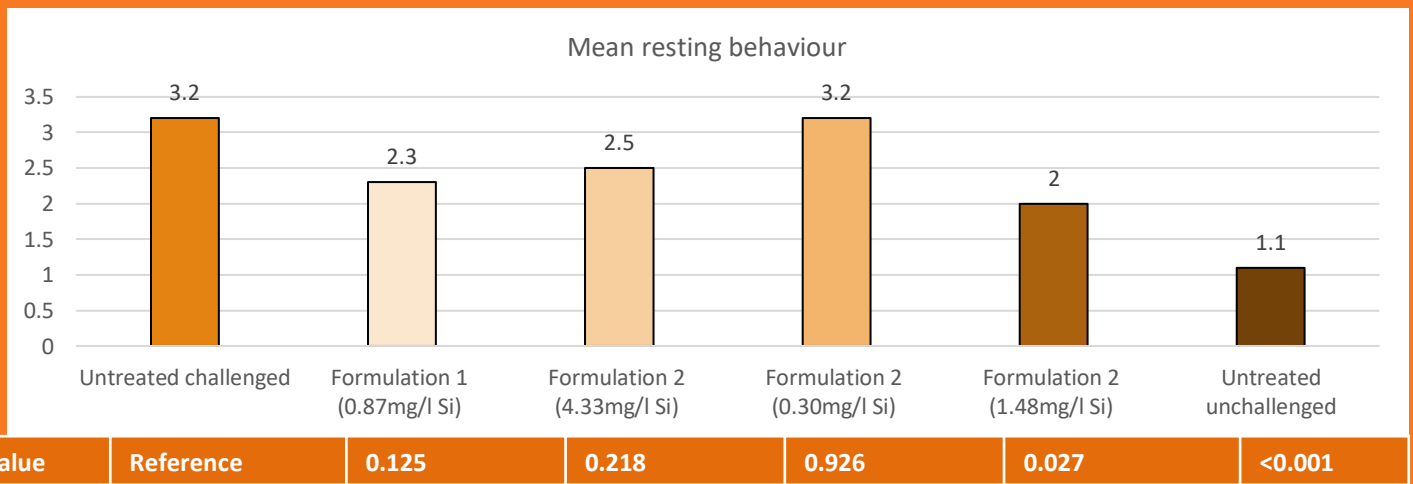
Feed Conversion Ratio (FCR) 0-49 days



Significant improvement in feed conversion ratio suggests a better performance in birds after Poulsil supplementation.

WELFARE TRIAL

Group name	Replicates	Birds per replicate	Birds per group	Gouty arthritis induced by intra-articular injection of sodium urate
Untreated challenged	3	8	24	0.2 ml Na urate (30mg/ml) inj.
Formulation 1 (0.87mg/l Si)	3	8	24	0.2 ml Na urate (30mg/ml) inj.
Formulation 1 (4.33mg/l Si)	3	8	24	0.2 ml Na urate (30mg/ml) inj.
Formulation 2 (0.30mg/l Si)	3	8	24	0.2 ml Na urate (30mg/ml) inj.
Formulation 2 (1.48mg/l Si)	3	8	24	0.2 ml Na urate (30mg/ml) inj.
Untreated unchallenged	3	8	24	Not induced



Significant improvement in mean resting behavior indicates a better welfare status in birds after Poulsil Supplementation.

Resting behavior was measured after inducing gouty arthritis by intra-articular injection of sodium urate. It is measured by counting on 12 different times, with 10 minutes interval, the number of birds with the eyes closed.



Application (Broiler, Breeder, Layer & Turkey)

Recommended dosage : 150g/ton
(21.4 mg Si /Kg of feed)