

# HATCHGEL SP

POULTRY



FOR VISIBLE SUPPORT



 **Biochem**  
Feed Safety for Food Safety®

# HATCHGEL SP

## FOR VISIBLE RESULTS

### Hatchery processing

The high genetic potential that modern poultry breeds are equipped with is already determined at hatch. Various factors can influence if this potential can be exploited fully. One of the biggest challenges in poultry farming is the establishment and maintenance of a sound gut health. More than half of all necessary treatments are related to intestinal disorders.

Hatchlings should receive a maximum of health promoting support to be able to reach their full potential – the sooner the better. Especially in the first days of life, when the intestinal microbiota is still developing and shifting, the conditions for future performance are set. The potential length of the intestinal villi, and thereby the size of intestinal surface area available for nutrient resorption, is also determined genetically. This potential can only be fully utilized when the growth conditions are optimal. A healthy intestine with a balanced microbiota, free from inflammation and infection, is needed. Intestinal damages that take place in an early stage of life cannot be fully compensated later on.

---

Intestinal health is a decisive factor for **reliable performance** and needs to be supported from the beginning

---

We are facing the need to constantly optimize health standards for the animals and improve efficient and ecological food production. Taking steps to secure the intestinal health of poultry as early as during hatchery processing is the key to success.



Young chicks in hatchery

HATCHLINGS ARE ESPECIALLY SENSITIVE TO NEGATIVE INFLUENCES AND PATHOGENS

### Gel application

Several methods are available for the application of substances to chicks in the hatchery. The use of gel droplets and its required technical equipment are becoming widely popular as it offers various benefits compared to conventional spray application.

The use of a gel provides an effective application method for various substances such as vaccines, micronutrients, and probiotics. Especially for the application of feed additives, the use of a gel enables a higher oral intake rate than spray mist, combined with a lessened risk of hypothermia related to repeated spray applications.

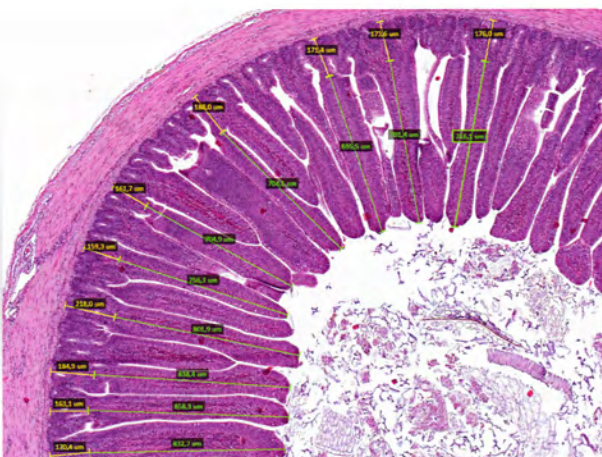
**HatchGel SP** is more than just an application medium – its unique formulation makes it a functional carrier, benefitting the health of the chick.

### HatchGel SP

The new, unique formulation of **HatchGel SP** provides a gel solution that combines all the attributes needed for successful hatchery treatment, making it the ideal carrier for orally applied substances. Within one formulation, **HatchGel SP** combines:

- ⊕ Nutritional value
- ⊕ Prebiotic and immune stimulating effects
- ⊕ Water stabilizing effect
- ⊕ Vaccine protection
- ⊕ Coloring effect

The prebiotic component of **HatchGel SP** not only supports the efficacy of probiotics and other gut-active components, it also boosts the immune system. This superior carrier for hatchery applications puts your herd one step ahead of the game.



Histological cross-section of the small intestine

LONG VILLI AND A HEALTHY MUCOSA ARE NEEDED FOR EFFICIENT NUTRIENT RESORPTION

# HATCHGEL SP

## FOR VISIBLE SUPPORT

### „Superfood“ Spirulina adds extra value

Microalgae, such as Spirulina, are single-celled organisms that can be found as phytoplankton at the beginning of the food chain. Rich in  $\beta$ -glucans and packed with plentiful vitamins, antioxidants, and polyunsaturated fatty acids, they are an ideal supplement to boost health and performance. Long known for its various health benefits in humans, microalgae are now also advancing into animal nutrition. Their bioactive ingredients are scientifically proven to be

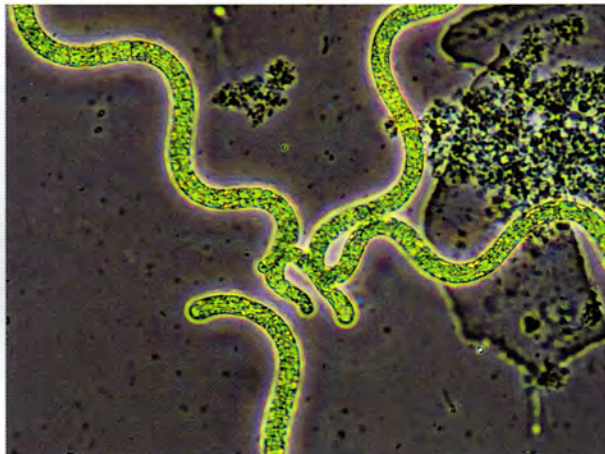
- + Anti-inflammatory
- + Immune modulating
- + Prebiotic

Several studies have proven the beneficial effects of microalgae on performance, immune functions and intestinal health of chicken.

---

HatchGel SP implements the beneficial properties of Spirulina to support performance, immunity and health.


---



Microscopic view of Spirulina

A positive impact on the specific and unspecific immune responses, a modulation of the intestinal microbiota, and improved performance parameters are some of the advantages of feeding this “superfood”. Especially day-old chicks will benefit from these properties, responding with improved robustness and a decreased susceptibility to illness.

Making these attributes an advantage for the early provision of young animals, the use of Spirulina microalgae makes **HatchGel SP** not only a superior gel carrier with enhanced efficacy but also a nutritious supplementation. The beneficial effects of Spirulina predispose **HatchGel SP** as an ideal carrier for immune-stimulating or probiotic products.



MICROALGAE COMBINE NUTRITIOUS VALUE WITH HIGHLY EFFECTIVE BIOACTIVE INGREDIENTS

### Combination with B.I.O.Sol

The possibility of combining **HatchGel SP** with Biochem's probiotic product **B.I.O.Sol** maximizes the benefits of both products for the chicks.

**B.I.O.Sol** is a complementary feeding stuff which supports a quick development of the intestinal microbiota right from the start. The powerful combination of lactic acid bacteria and betaine provide for

- ⊕ A fast inoculation of the intestinal tract
- ⊕ Stimulation of the immune system
- ⊕ Lower susceptibility for pathogens

Provided as soon after hatch as possible, the lactic acid bacteria contained in **B.I.O.Sol** quickly colonize the intestinal tract of the chick, thus preventing the attachment of present pathogens to the mucous membrane by competitive exclusion.

**HatchGel SP** is ideally suited for a combined application with **B.I.O.Sol**

A stable microbiota is established more quickly. In combination with the stimulating effects of betaine on cell growth, the morphological development of the gut is being promoted.

**B.I.O.Sol** is continuously proving its efficacy by reducing mortality rates in the first week post-hatch and ensuring a greater uniformity of the flock. Increased slaughter weights and an improvement in feed conversion are also amongst the benefits.

The combination with **HatchGel SP** will magnify these effects as it further supports the immune system. High immune competence and a balanced microbiota are key factors in raising healthy and high-performing animals.



**B.I.O.SOL** IS IDEALLY SUITED FOR A COMBINED APPLICATION

# HATCHGEL SP

## FOR VISIBLE APPLICATION

### Application

**HatchGel SP** provides flexible application methods. It is primarily designed for gel droplet application in the hatchery with suitable equipment. Its unique formulation includes not only the beneficial effects of Spirulina. Other substances provide protective properties for sensitive substances such as vaccines. The chlorine content of treated water is being neutralized up to a concentration of 5 ppm chlorine, reducing the damaging effect on susceptible probiotics or vaccines.

The further addition of colorants is not necessary with **HatchGel SP** since it already comes in a bright green color with best visibility for the chicks.

Besides the use in the hatchery, **HatchGel SP** is also suitable for use on farm. The freshly prepared gel can be spread on top of starter feed or onto the chicks for preening upon arrival on the farm. The water for mixing the gel can also be partially replaced by liquid vitamin preparations.

---

**HatchGel SP** can be applied in hatchery or in the house, as droplet application or on top of starter feed

---



Gel droplets are preened off feathers

### General dosage:

100 g **HatchGel SP** dissolved in 2.5 liters fresh water for 100 crates or 10,000 chicks.

Hatchery application: 25 ml for droplet application per crate. Chicks need sufficient preening time after application to assure high and even oral intake rates. They should be exposed to adequately bright light to maintain preening activity for at least five minutes.

On-farm use: 100 g **HatchGel SP** dissolved in 2.5 liters fresh water per 10,000 chicks. Gel should be applied on top of starter feed immediately before chicks are placed in the house. Droplet application onto the chicks is also possible. After application, leave chicks in crate for at least five minutes to assure sufficient preening time.

### Advantages:

**HatchGel SP** is a functional, innovative gel carrier that provides multiple effects with a single application:

- + Nutritional value
- + Immunity support
- + Vaccine protection and water stabilizing effect

With its special formulation and great solubility, it is an easy to use, no-fuss gel that helps you with the uncomplicated care of your chicks.

GEL DROPLETS ARE EASILY VISIBLE  
AND DO NOT SOAK THE FEATHERS



# APPLICATION GUIDE

## EQUIPMENT



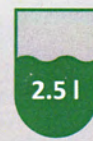
1 Sachet  
Hatch Gel SP



Blender



Sieve



Bucket with  
2.5 l water



Application  
container

## PROCEDURE

①

Fill bucket  
with water



②

Place blender in water and  
turn on **low** stage



③

Slowly pour **HatchGel SP**  
in water vortex



④

Stir for 2 minutes until all  
lumps are dissolved



④b

Add more additives and stir  
for another minute  
(optional)



⑤

Filter gel through sieve into  
desired application container



With you all the way!



Biochem Zusatzstoffe Handels- und Produktionsgesellschaft mbH

Küstermeyerstraße 16 · 49393 Lohne · Germany · Phone: +49 (0) 4442- 92890 · [www.biochem.net](http://www.biochem.net)